

# Alpha

Design by Ramos & Bassols.

## Reference

**7940.**

## Application

Wall Lamps

## Installation type

Surface

## Description

Wall light designed by Ramos & Bassols with basic lines but great features. Available in matt white lacquer and chrome, matt black lacquer and chrome, matt graphite lacquer and black and matt white lacquer. Its methacrylate diffuser gives a warm, very cosy light. Alpha follows the reader's movements as it rotates and can be angled, opening up to 75° and turning through 360°, which also enables it to provide indirect lighting.

## Diffuser

Polycarbonate diffuser

## Materials

Diffuser: Polycarbonate

Lid: Zamak

Body: Aluminum

## Finish



**7940-03** White and chrome (RAL 9016)



**7940-04** Black and chrome (RAL 9005)

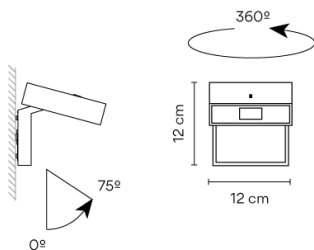


**7940-18** Graphite and black (RAL 7016)



**7940-93** White (RAL 9016)

## Sketch



## Electrical characteristics

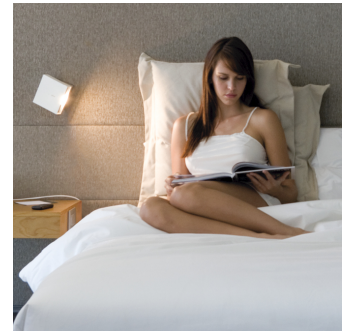
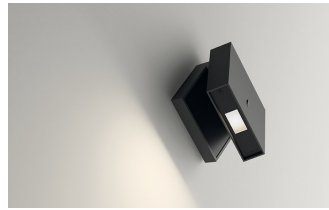
1 x LED 2.3W 700mA



Total 2.3 W



# VIBIA



**Light source:** 2700K CRI >80 199 lm 95 lm/W

**Fixture:** 31 lm 14.8 lm/W

**Driver included:** CC - Constant Current 700 mA 100~240V 50/60Hz

**Electronic dimming ON/OFF**

## Technical characteristics

- On/off switch on the front cover

## Physical characteristics

1 Box / 0.13 x 0.20 x 0.21 m. / Vol. 0.0054 m<sup>3</sup> /  
Gross weight 1.2 kg. / Net weight 1.1 kg.

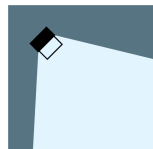
## Installation and assembly

Please, see the installation manual

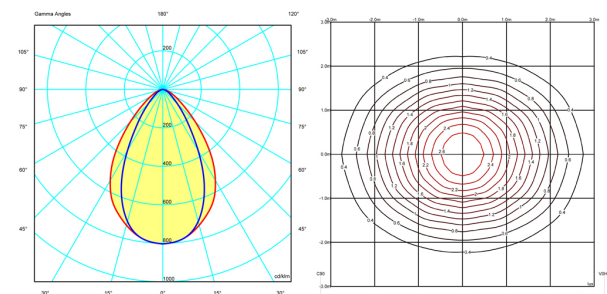
## Light distribution

### Reading

Lamp having a light beam whose main function is to supply sufficient light for reading.



## Photometric data



## Certificates

