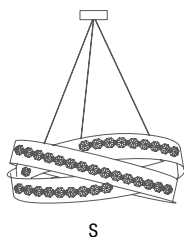


Essentia

- .20 foglia oro/gold leaf
- .21 foglia argento/silver leaf
- .22 foglia rame/copper leaf
- .24 bianco/white
- .35 nero/black

Cristalli ottagonali
Octagonal crystals:
 .B cristallo/crystal
 .SP spectra
 .SW swarovski



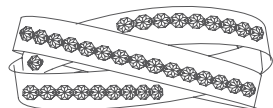
| Art./Code | Note | Dimensions cm | Bulb |
|---|-------------|---------------|---|
| S 60 055.325.03 CE ∇ IP 20 \oplus | .24/.35 | .B | Ø 60 H 28 tot H 170 3 x E27 |
| | .20/.21/.22 | .B | |
| | .24/.35 | .SP | |
| | .20/.21/.22 | .SP | |
| | .24/.35 | .SW | |
| | .20/.21/.22 | .SW | |
| S 60 055.325.08 CE ∇ IP 20 \oplus | .24/.35 | .B | Ø 60 H 28 tot H 170 8 x G9 |
| | .20/.21/.22 | .B | |
| | .24/.35 | .SP | |
| | .20/.21/.22 | .SP | |
| | .24/.35 | .SW | |
| | .20/.21/.22 | .SW | |
| S 60 055.325.25 CE ∇ IP 20 \oplus | .24/.35 | .B | Ø 60 H 28 tot H 170 LED 24W down 9W up lm 2.900 K° 3.000 |
| | .20/.21/.22 | .B | |
| | .24/.35 | .SP | |
| | .20/.21/.22 | .SP | |
| | .24/.35 | .SW | |
| | .20/.21/.22 | .SW | |
| S 100 055.325.06 CE ∇ IP 20 \oplus | .24/.35 | .B | Ø 100 H 46 tot H 170 6 x E27 |
| | .20/.21/.22 | .B | |
| | .24/.35 | .SP | |
| | .20/.21/.22 | .SP | |
| | .24/.35 | .SW | |
| | .20/.21/.22 | .SW | |
| S 100 055.325.18 CE ∇ IP 20 \oplus | .24/.35 | .B | Ø 100 H 46 tot H 170 8 x G9 |
| | .20/.21/.22 | .B | |
| | .24/.35 | .SP | |
| | .20/.21/.22 | .SP | |
| | .24/.35 | .SW | |
| | .20/.21/.22 | .SW | |
| S 100 055.325.26 CE ∇ IP 20 \oplus | .24/.35 | .B | Ø 100 H 46 tot H 170 LED 24W down 9W up lm 2.900 K° 3.000 |
| | .20/.21/.22 | .B | |
| | .24/.35 | .SP | |
| | .20/.21/.22 | .SP | |
| | .24/.35 | .SW | |
| | .20/.21/.22 | .SW | |
| S 120 055.325.20 CE ∇ IP 20 \oplus | .24/.35 | .B | Ø 120 H 55 tot H 170 6 x E27 |
| | .20/.21/.22 | .B | |
| | .24/.35 | .SP | |
| | .20/.21/.22 | .SP | |
| | .24/.35 | .SW | |
| | .20/.21/.22 | .SW | |
| S 120 055.325.21 CE ∇ IP 20 \oplus | .24/.35 | .B | Ø 120 H 55 tot H 170 8 x G9 |
| | .20/.21/.22 | .B | |
| | .24/.35 | .SP | |
| | .20/.21/.22 | .SP | |
| | .24/.35 | .SW | |
| | .20/.21/.22 | .SW | |
| S 120 055.325.27 CE ∇ IP 20 \oplus | .24/.35 | .B | Ø 120 H 55 tot H 170 LED 24W down 9W up lm 2.900 K° 3.000 |
| | .20/.21/.22 | .B | |
| | .24/.35 | .SP | |
| | .20/.21/.22 | .SP | |
| | .24/.35 | .SW | |
| | .20/.21/.22 | .SW | |

* Su richiesta/On request 2700K°

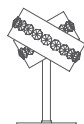
Essentia

.20 foglia oro/gold leaf
 .21 foglia argento/silver leaf
 .22 foglia rame/copper leaf
 .24 bianco/white
 .35 nero/black

Cristalli ottagonali
Octagonal crystals:
 .B cristallo/crystal
 .SP spectra
 .SW swarovski



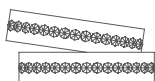
PL 60



LP



AP 35



AP 2



AP 50

| Art./Code | Note | Dimensions cm | Bulb |
|---|-------------|---------------|---|
| PL 60 057.325.03 CE ∇ IP 20 \oplus | .24/.35 | .B | Ø 60 H 28 3 x E27 |
| | .20/.21/.22 | .B | |
| | .24/.35 | .SP | |
| | .20/.21/.22 | .SP | |
| | .24/.35 | .SW | |
| PL 60 057.325.08 CE ∇ IP 20 \oplus | .24/.35 | .B | Ø 60 H 28 8 x G9 |
| | .20/.21/.22 | .B | |
| | .24/.35 | .SP | |
| | .20/.21/.22 | .SP | |
| | .24/.35 | .SW | |
| PL 60 057.325.25 CE ∇ IP 20 \oplus | .24/.35 | .B | Ø 60 H 28 LED 24W down 9W up lm 2.900 K° 3.000 |
| | .20/.21/.22 | .B | |
| | .24/.35 | .SP | |
| | .20/.21/.22 | .SP | |
| | .24/.35 | .SW | |
| SP 2 055.325.02 CE ∇ IP 20 \oplus | .24/.35 | .B | Ø 18 H 7 tot H 150 1 x G9 |
| | .20/.21/.22 | .B | |
| | .24/.35 | .SP | |
| | .20/.21/.22 | .SP | |
| | .24/.35 | .SW | |
| SPP 1 055.325.01 CE ∇ IP 20 \oplus | .24/.35 | .B | Ø 13 H 7 tot H 150 1 x G9 |
| | .20/.21/.22 | .B | |
| | .24/.35 | .SP | |
| | .20/.21/.22 | .SP | |
| | .24/.35 | .SW | |
| AP 2 056.325.01 CE ∇ IP 20 \oplus | .24/.35 | .B | L 36 H 19 P 12 1 x R7s (78 mm) |
| | .20/.21/.22 | .B | |
| | .24/.35 | .SP | |
| | .20/.21/.22 | .SP | |
| | .24/.35 | .SW | |
| AP 35 056.325.03 CE ∇ IP 20 \oplus | .24/.35 | .B | L 35 H 10 P 12 1 x R7s (78 mm) |
| | .20/.21/.22 | .B | |
| | .24/.35 | .SP | |
| | .20/.21/.22 | .SP | |
| | .24/.35 | .SW | |
| AP 50 056.325.05 CE ∇ IP 20 \oplus | .24/.35 | .B | L 50 H 10 P 12 1 x R7s (78 mm) |
| | .20/.21/.22 | .B | |
| | .24/.35 | .SP | |
| | .20/.21/.22 | .SP | |
| | .24/.35 | .SW | |
| LP 052.325.01 CE ∇ IP 20 \oplus | .24/.35 | .B | Ø 18 H 25 1 x G9 |
| | .20/.21/.22 | .B | |
| | .24/.35 | .SP | |
| | .20/.21/.22 | .SP | |
| | .24/.35 | .SW | |

* Su richiesta/On request 2700K*

FINITURE

FINISH

| | |
|-----|-----------------------------------|
| .28 | antracite/anthracite |
| .24 | bianco/white |
| .80 | bronzo/bronze |
| .81 | cromo/chrome |
| .21 | foglia argento/silver leaf |
| .20 | foglia oro/gold leaf |
| .26 | foglia ossidata/oxidized leaf |
| .22 | foglia rame/copper leaf |
| .35 | nero/black |
| .03 | nichel lucido/shiny nickel |
| .00 | oro 24 kt/ gold 24kt |
| .09 | oro anticato/antique gold |
| .07 | oro spazzolato/brushed satin gold |

MATERIALI

MATERIALS

Cristalli quadrati **Square crystals:**

| | |
|----|-------------------|
| .B | cristallo/crystal |
| .A | Ambra/Amber |
| .B | Cristallo/Crystal |
| .N | Nero/Black |
| .V | Viola/Violet |

Cristalli ottagonali **Octagonal crystals:**

| | |
|-----|-------------------|
| .B | cristallo/crystal |
| .SP | spectra |
| .SW | swarovski |

Losanga/Rectangular **crystal:**

| | |
|----|-------------------|
| .C | cristallo/crystal |
| .W | water crystal |

Incanto **crystal:**

| | |
|----|-------------------|
| .C | cristallo/crystal |
| .S | fumè/smoked |

PESI E VOLUMI

WEIGHTS AND VOLUMES

| | |
|----------------|-------------------------|
| kg A | peso netto/net weight |
| kg B | peso lordo/gross weight |
| m ³ | metri cubi/cubic meters |

DIMENSIONI cm

DIMENSIONS cm

| | |
|-------|--|
| ∅ | diametro/diameter |
| H | altezza struttura height structure |
| tot H | altezza totale con cavo total height with cable |
| L/W | larghezza/width |
| P/D | profondità/depth |

SIMBOLI

SYMBOLS



Tutti i modelli portano la marcatura CE. Tale marcatura è stata richiesta dalla Comunità Europea, e riconosciuta in tutta Europa, con la direttiva 93/68 (ampliamento della direttiva 73/23) per confermare che i nostri prodotti sono stati sottoposti alle prove di sicurezza elettrica. All the models carry the EC symbol. This symbol is required by the European Community and recognised throughout Europe under Directive 93/68 (an updated version of Directive 73/23). It confirms that our products have passed electrical safety testing.



Apparecchio classe/Fixture class



Apparecchio adatto al montaggio su superfici normalmente infiammabili.
Unit suitable for installation on normally inflammable surfaces.



Grado di protezione contro corpi solidi o liquidi.
Degree of protection against solid bodies or liquids.