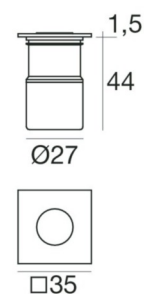


Uplights | 1 x powerLED 2,0 W 630 mA | CRI 80
93134C30



| Technical data | |
|--|---------------|
| Installation position | Floor |
| Installation environment | Outdoor |
| Light Source | LED |
| Optics | Medium Flood |
| Power | 2 W |
| Luminous flux (source) | 266 lm |
| Current intensity | 630mA |
| CCT / Tonalità | 5000 K |
| Colour rendering index | 80 Ra |
| C.C. / C.V. | CC |
| Energy class | A++ |
| Safety class | 3 |
| IP | IP67 |
| Glow wire test | 850° |
| Direct mounting on normally flammable surfaces | Yes |
| CE | Yes |
| ETL | No |
| Operating temperature | -20°C / +50°C |
| Driver included | No |
| Induzione | No |
| Emergency mode | No |
| Directional | No |
| Tilting | No |
| Walk-over | Yes |
| Drive-over | No |
| Cable included | Yes |
| Cable length | 1 m |
| Resin potting | Yes |

| Finishing casing | |
|------------------|----------------------|
| Material | Stainless steel 316L |
| Colour | steel |
| Processing | Shot peening |

| Electronics | | |
|-------------|---|-------|
| | On/Off Driver 190~250V AC / 260~360V DC | 89420 |
| | On/Off Driver 180~300V AC | 99179 |
| | On/Off Driver 180~300V AC | 99186 |



Uplights | 1 x powerLED 2,0 W 630 mA | CRI 80
93134C30

Single emission uplights for outdoor application. The cold white LED light source with a medium flood light distribution is composed of 1 powered LEDs with CCT of 5000 K and a CRI 80; the source luminous flux is 266 lm, with a 133.0 lm/W nominal luminous efficacy.

The device body is made of stainless steel and features a steel finish, processed by means of shot peening. The ingress protection degree is IP67; the total weight is of 0.180 kg. The power supply driver is not provided and is to be ordered separately.

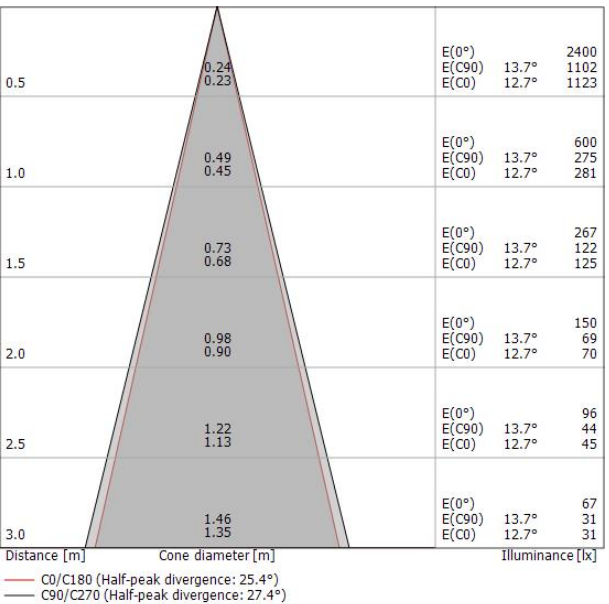
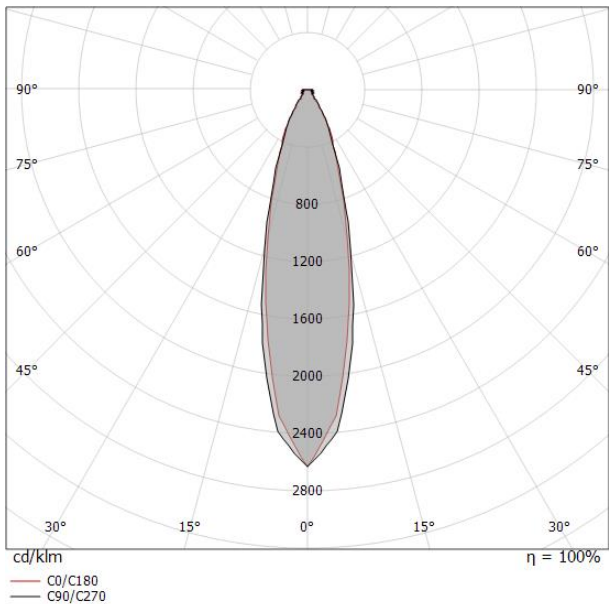
The total absorbed power is 2,0 W. The power supply cable is included and features.

The device features protection class III and can be floor-mounted with an outer casing, code 84918(for concrete or masonry).

| Illuminotechnical Features | |
|----------------------------|----------|
| Light Output Ratio (LOR) | 85 % |
| Luminous flux (source) | 266 lm |
| Luminaire luminous flux | 228 lm |
| Consumption | 2,0 W |
| Luminaire efficacy | 114 lm/W |
| Colour temperature | 5000 K |
| Colour rendering index | 80 Ra |

| UGR | |
|-------------------|----------|
| X=4H Y=8H | S=0.25H |
| Reflection factor | 70/50/20 |
| UGR transversal | > 28 |
| UGR axial | > 28 |

| OPTICAL | |
|-----------------------------|-------------|
| Light distribution simmetry | Symmetrical |
| Ottica C0/C180 | 25° |





Beret_2Q | Uplights | Accessories
93134C30



Outer casing
L=87mm, H=60mm, D=60mm

Code
84918