

## SPUN LIGHT F

<b>Mounting</b>	Floor
<b>Lamps description</b>	1 x MAX 205W E27 HSGS
<b>Environment</b>	Indoor
<b>Finish</b>	Aluminum, MUD, Shiny black, Shiny white
<b>Design awards</b>	Red Dot Design Award 2004
<b>Technical description</b>	Floor fixture providing diffused lighting. Spun metal frame and diffuser, die-cast aluminum diffuser support arms and lamp-holder support, painted in the colors indicated below. White, injection-molded polycarbonate diffuser supports. On the cable there is the electronic dimmer which allows the regulation of light brightness.



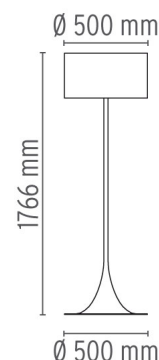
### Spun Light F

designed by Sebastian Wrong

Floor fixture providing diffused lighting.

- F66 I 2009 Shiny white
- F66 I 2030 Shiny black
- F66 I 2021 Mud
- F66 I 2050 Polished aluminium

### DIMENSIONS

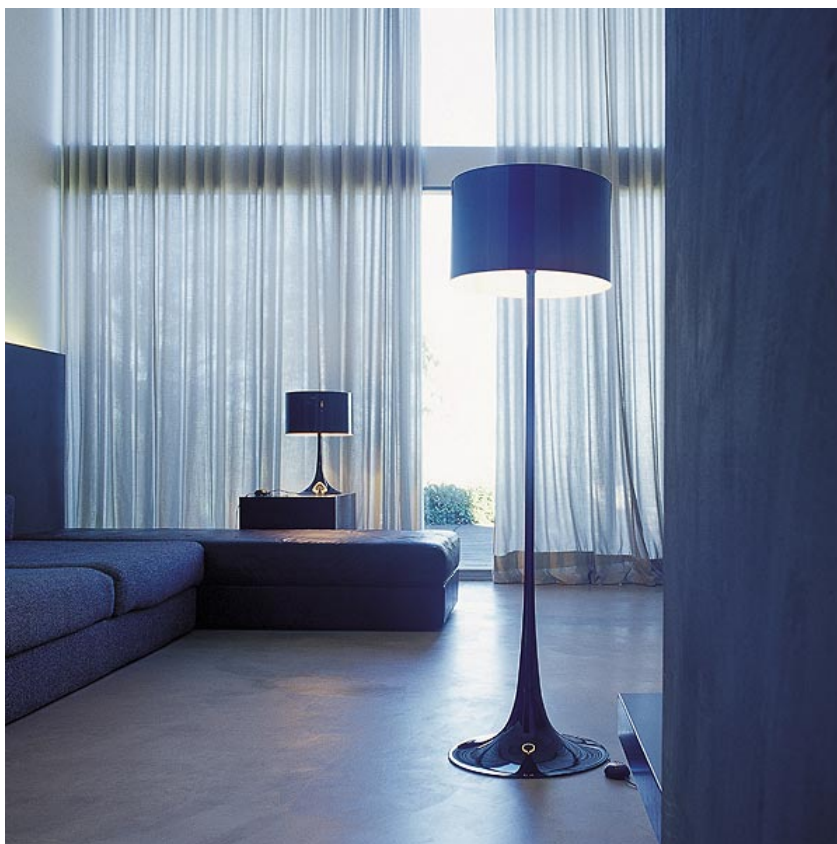


## ELECTRICAL

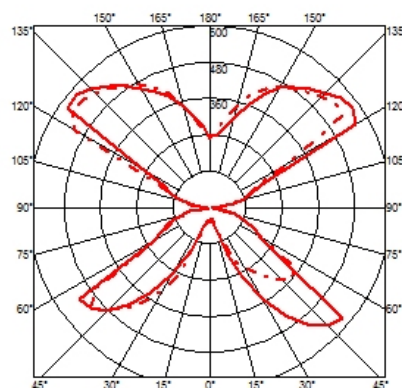
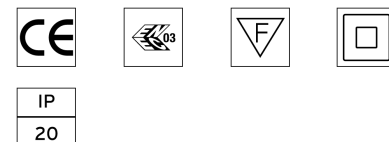
<b>Emergency</b>	Without
<b>Switching</b>	On the cable there is the electronic dimmer which allows the regulation of light brightness with a dial.
<b>Voltage (V)</b>	220/240

## PHYSICAL

<b>Supply</b>	Power cord
<b>Construction material</b>	Aluminum, Glass, Steel
<b>Weight (kg)</b>	9.3



### CERTIFICATIONS



## Spun Light F . Lamps



### HSGS 205W E27

**Lamp Watt:**  
205 W

**Lamp category:**  
Halogen mains

**Socket:**  
E27

**Lamp type:**  
HSGS



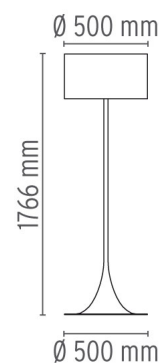
### Spun Light F

designed by Sebastian Wrong

Floor fixture providing diffused lighting.

- F6612009 Shiny white
- F6612030 Shiny black
- F6612021 Mud
- F6612050 Polished aluminium

### DIMENSIONS



### CERTIFICATIONS

