

SPUN LIGHT F

Mounting	Floor
Lamps description	1 x MAX 205W E27 HSGS
Environment	Indoor
Finish	Aluminum, MUD, Shiny black, Shiny white
Design awards	Red Dot Design Award 2004
Technical description	Floor fixture providing diffused lighting. Spun metal frame and diffuser, die-cast aluminum diffuser support arms and lamp-holder support, painted in the colors indicated below. White, injection-molded polycarbonate diffuser supports. On the cable there is the electronic dimmer which allows the regulation of light brightness.



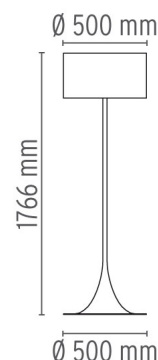
Spun Light F

designed by Sebastian Wrong

Floor fixture providing diffused lighting.

- F66 I 2009 Shiny white
- F66 I 2030 Shiny black
- F66 I 2021 Mud
- F66 I 2050 Polished aluminium

DIMENSIONS

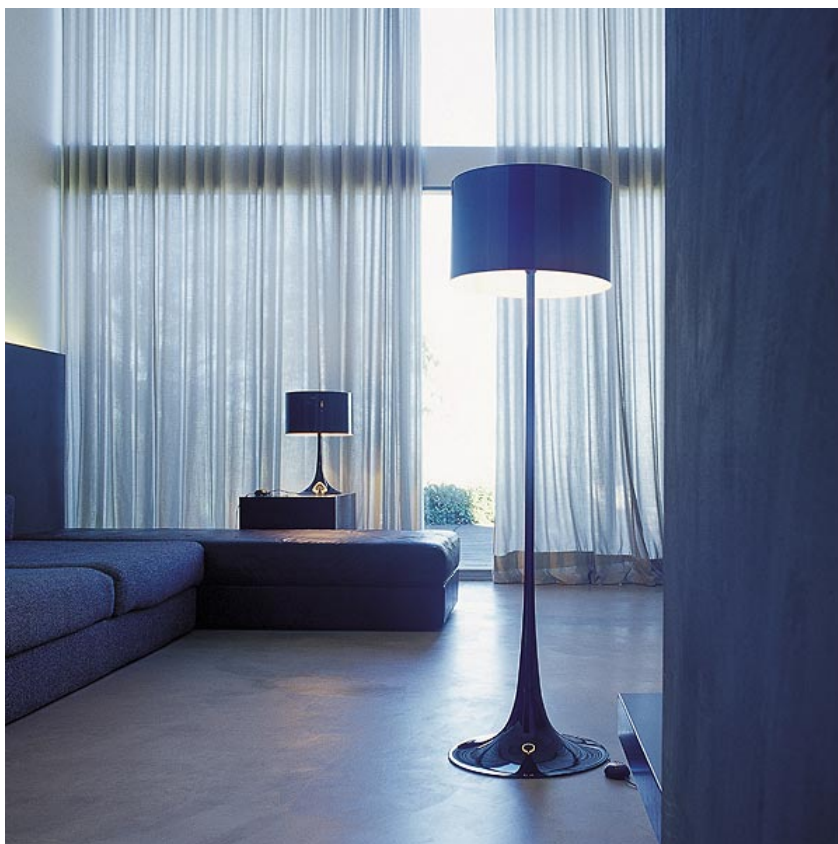


ELECTRICAL

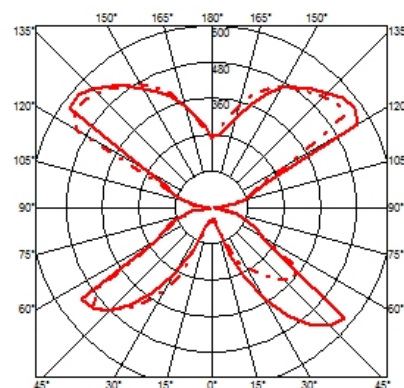
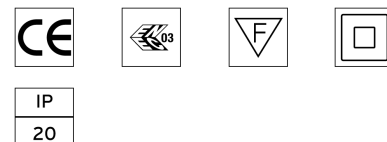
Emergency	Without
Switching	On the cable there is the electronic dimmer which allows the regulation of light brightness with a dial.
Voltage (V)	220/240

PHYSICAL

Supply	Power cord
Construction material	Aluminum, Glass, Steel
Weight (kg)	9.3



CERTIFICATIONS



Spun Light F . Lamps



HSGS 205W E27

Lamp Watt:
205 W

Lamp category:
Halogen mains

Socket:
E27

Lamp type:
HSGS



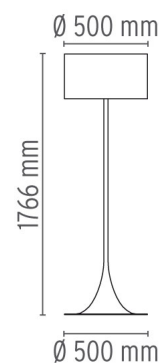
Spun Light F

designed by Sebastian Wrong

Floor fixture providing diffused lighting.

- F6612009 Shiny white
- F6612030 Shiny black
- F6612021 Mud
- F6612050 Polished aluminium

DIMENSIONS



CERTIFICATIONS

